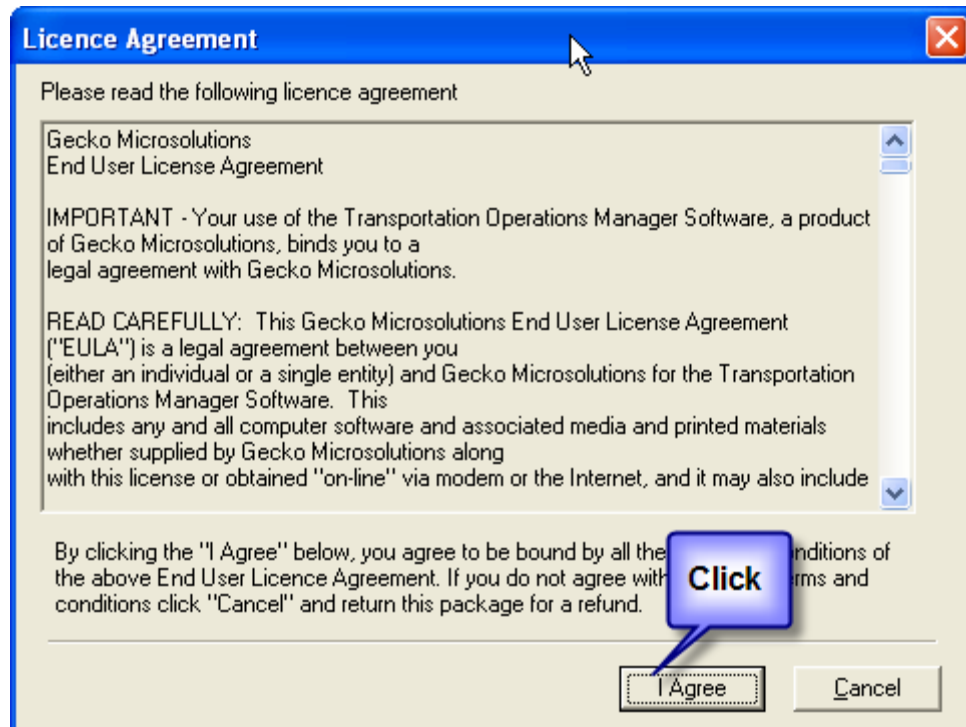
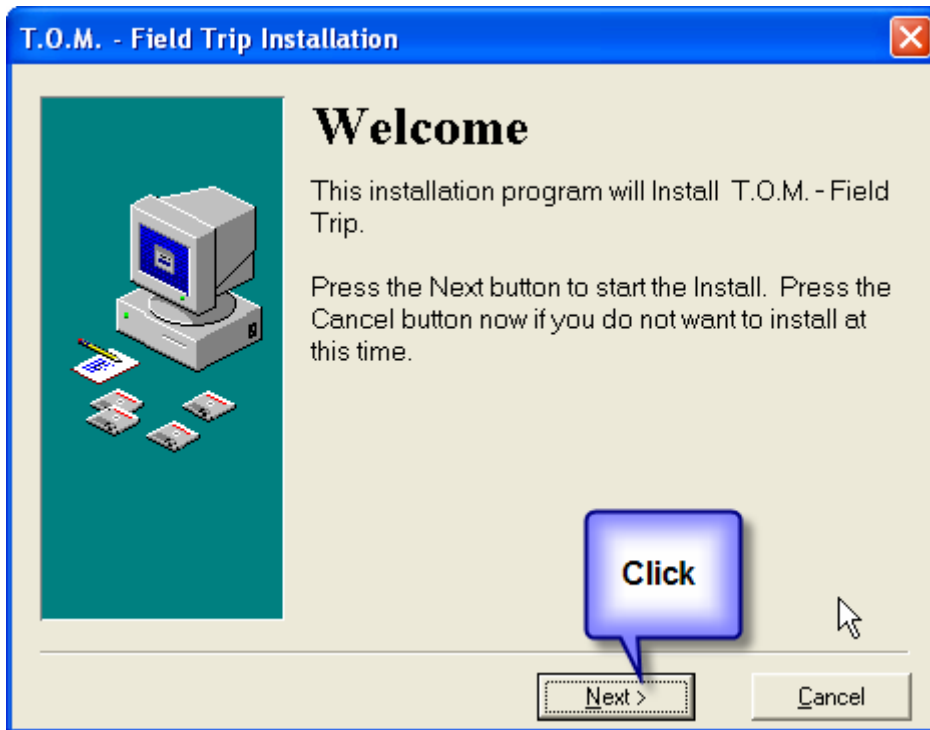


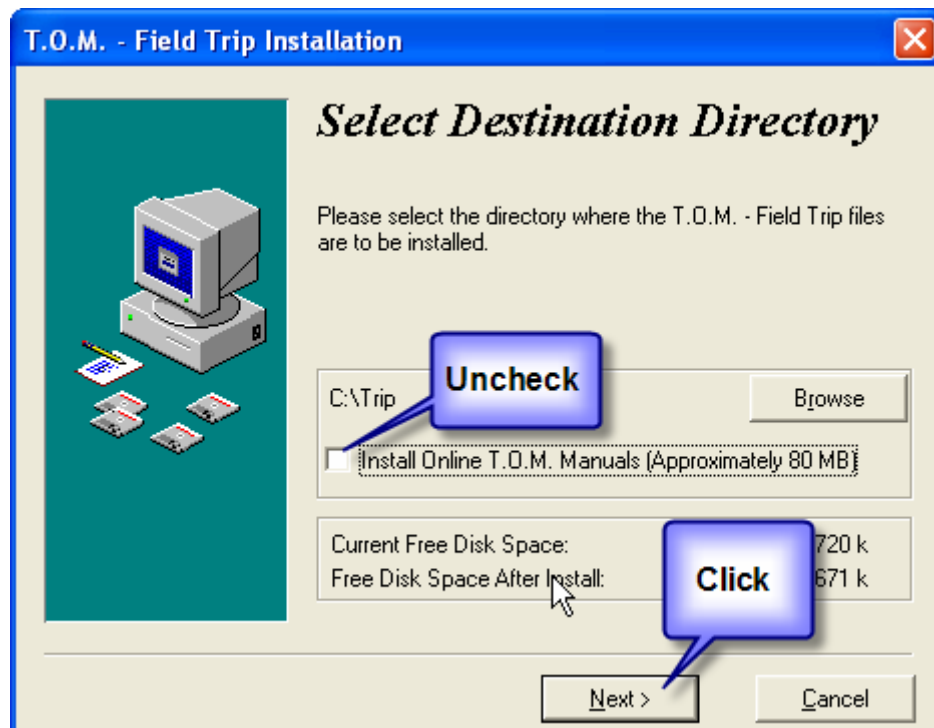
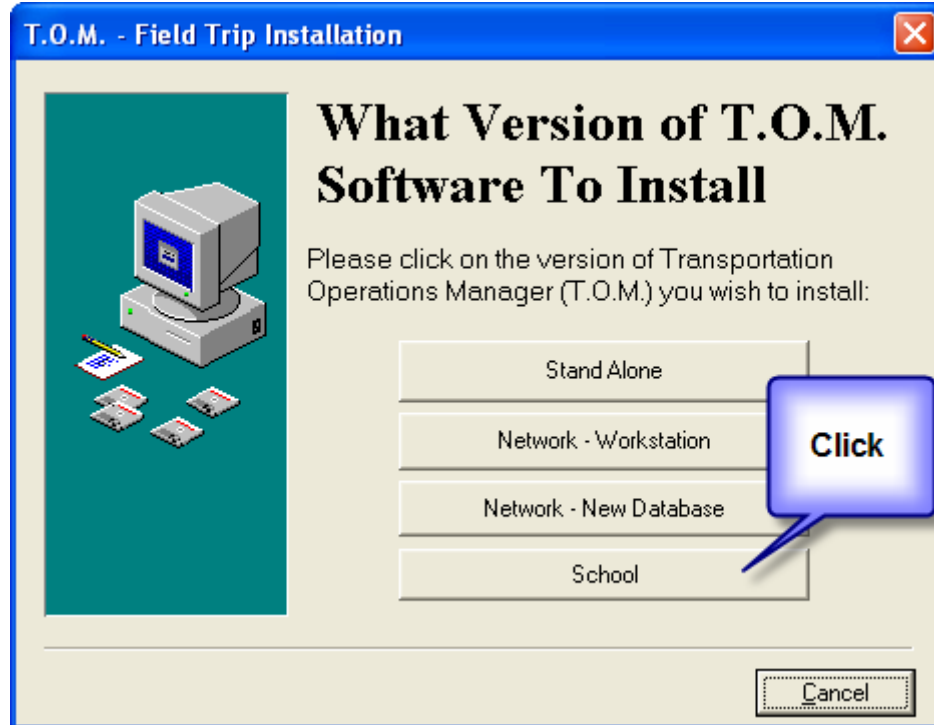


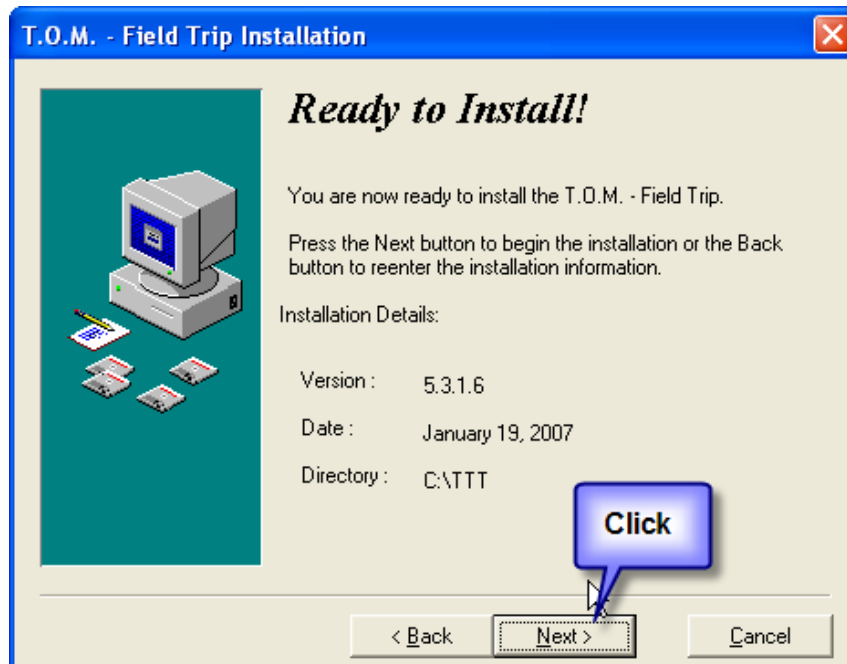
Setup Instructions on Installing the School Version of T.O.M. Field Trip Administration Software

After initiating the T.O.M. Setup.exe software you are greeted with the License Agreement Screen. Follow the screen instructions below to run the School Version of the T.O.M. Field Trip software setup.

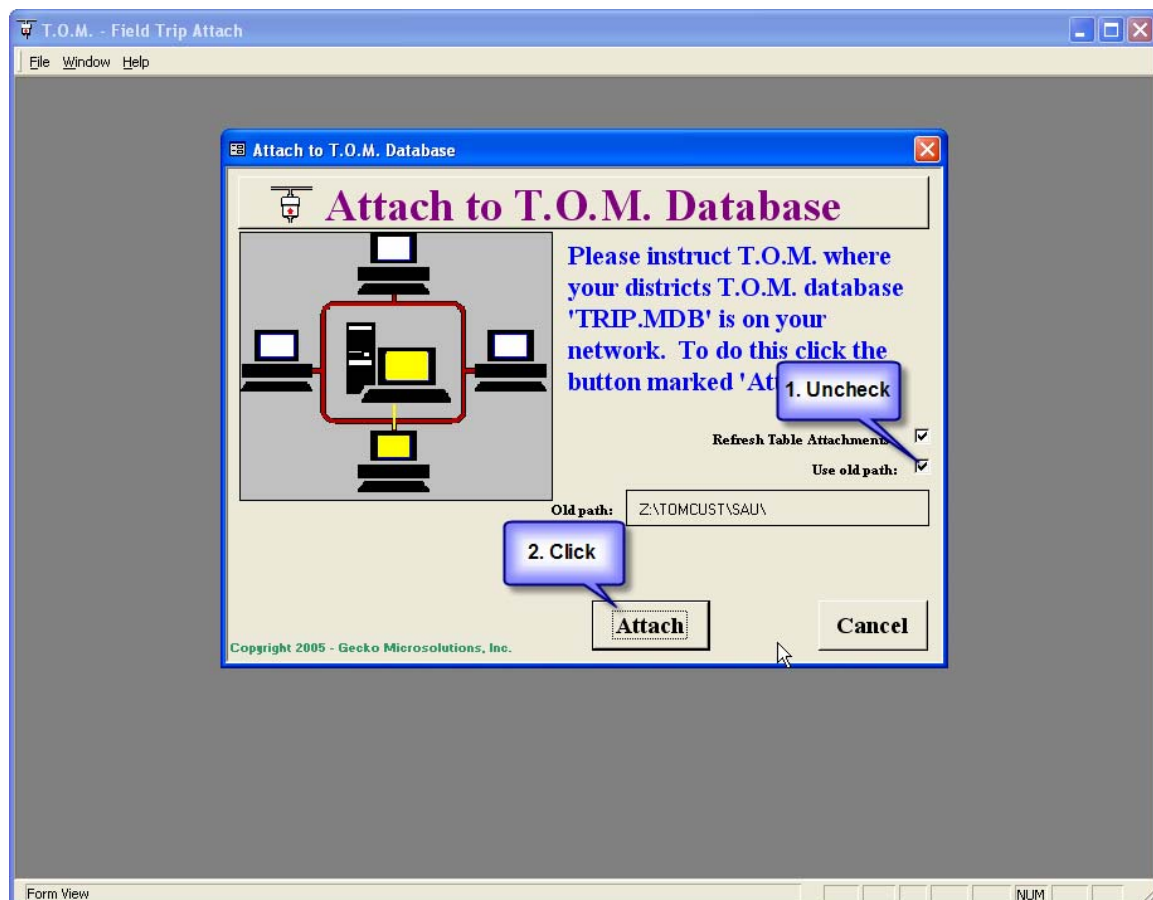


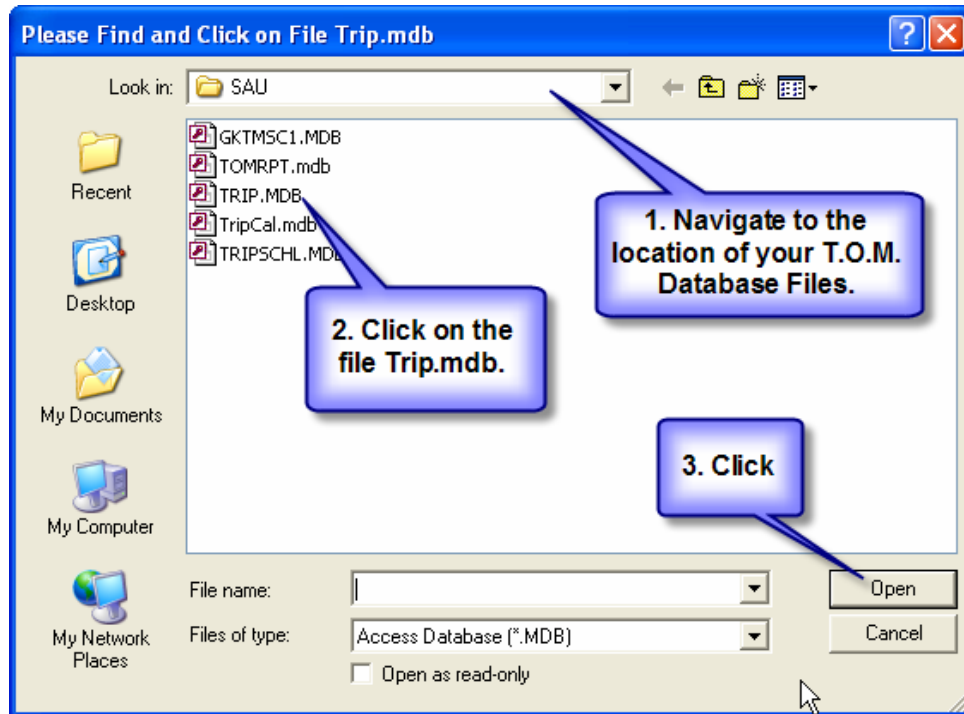






After several minutes the T.O.M. Field Trip Administration software will be installed and the Attach to T.O.M. Database Utility will then run.





After several minutes the Attach Utility will be then completed.

