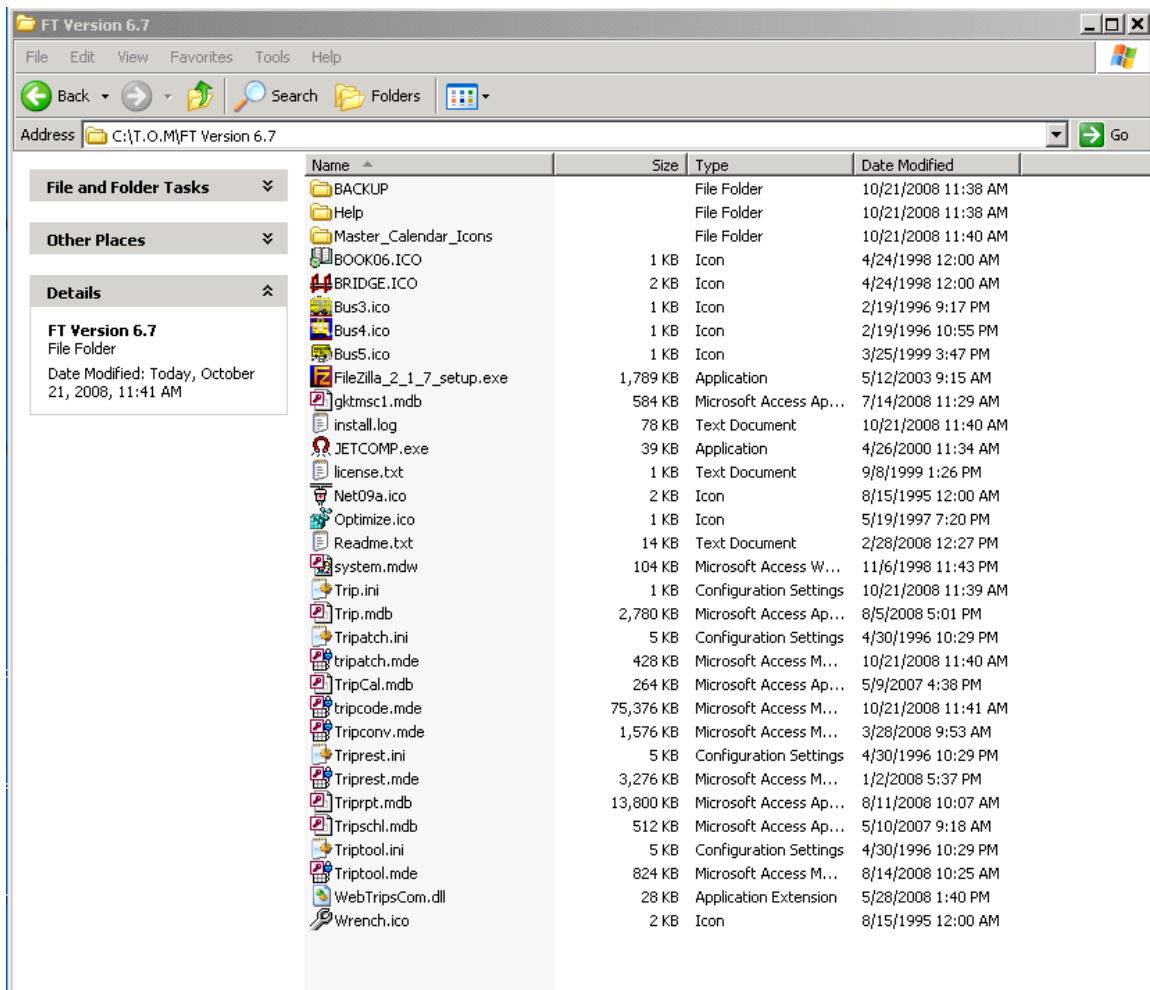


Make sure that your co-worker's TOM directory looks like this below. Notice they will need to have the file "Tripcode.mde" on their workstation, along with all these.

1. Look at his computer to make sure these files exist.

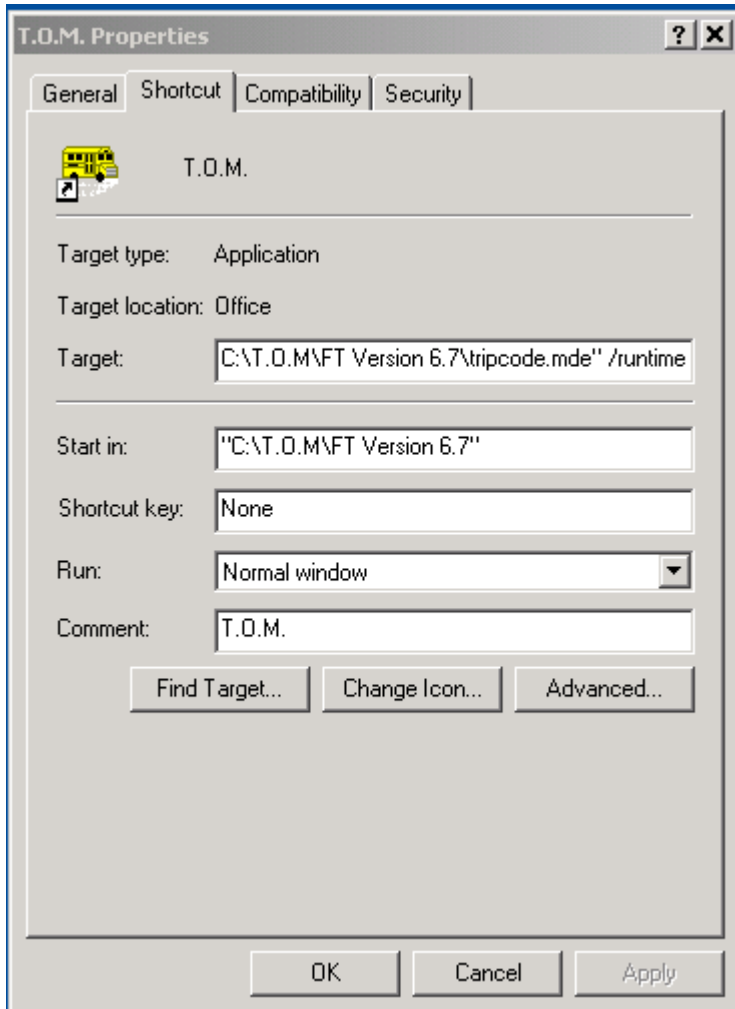
If these files already exist on his computer, next check the Icon on his desktop, see below.



Look at the properties on his icon



You will see the picture below.



Make sure that the “Target” Window above, is pointing at the C: directory where the tripcode.mde file is found in their computer.

When you attach, his TOM software, you will attach to the database on the server.